

# On|Off

18 – 20 FEBRUARY 2011

MERCER STUDIOS, 16 MERCER STREET, COVENT GARDEN, WC2H 9QE

## FRIDAY 18

11:00 JENA.THEO  
13:00-14:00 ADA ZANDITION \*  
15:30 FALGUNI & SHANE PEACOCK  
19:45 ASHLEY ISHAM

## SATURDAY 19

09:30 LOUISE AMSTRUP  
14:15 LOUISE GRAY  
18:00 BRYCE AIME  
21:30 JULIAN J SMITH

## SUNDAY 20

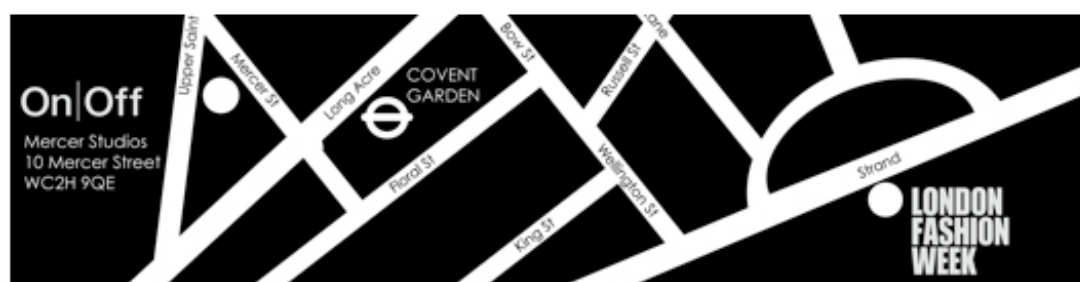
10:00 JAYNE PIERSON  
14:15 CHARLIE LE MINDU  
19:30 PAM HOGG

## EXHIBITION

CHARLIE LE MINDU  
BRONWEN MARSHALL  
LAURA THEISS  
THE ORPHAN'S ARMS  
BRACHER EMDEN  
LEE KLABIN  
ANDREW MAJTENYI  
ANGELINE LEE  
HAIZHEN WANG  
TESSA EDWARDS  
LEE LAPTHORNE

## DESIGN

VESSEL GALLERY  
THE DECORATORS  
INNERMOST



For further information on On | Off please visit On | Off's new look website – [www.onoff.tv](http://www.onoff.tv)  
Or please contact Hannah Cox T: 020 7287 2327 E: [pr@thedoll.org](mailto:pr@thedoll.org)

### Notes to Editors:

- On|Off takes place at Mercer Street Studios, 16 Mercer Street, Covent Garden, WC2H 9QE from 18<sup>th</sup> – 20<sup>th</sup> February 2011.
- On | Off was established in 2003 by Lee Lapthorne and is the first independent event of its kind.
- On | Off's Visionary Award and Presents has been responsible for launching designer labels Mark Fast, Peter Pilotto and Hannah Marshall.
- On|Off takes place during London Fashion Weeks in February and September
- On | Off is exclusive in its aim to bring both on and the best of off schedule designers together
- On | Off has supported over 300 designers and artists over the last 14 seasons, including Jasper Conran, Sinha Stanic, Yang Du, Allegra Hicks, Caroline Charles, Gareth Pugh, Emma Cook, Gareth Pugh, Hannah Marshall and Mark Fast.
- On | Off has attracted over 50,000 visitors including international trade, press and buyers during the past 14 seasons.